



Collection Rugs

BOLON





Contents

03	The Story of Bolon
06	Product Overview
08	Product Benefits
09	Collection Rugs Portfolio
11	Collection Rugs Overview
13	Standard Edge
15	Bolon Border
17	Fabric Border
19	Studio Custom Shape
21	Design Overview
23	Bolon Green
25	Care and Maintenance

The Story of Bolon

The Company

Bolon (est. 1949) - A third-generation family-owned Swedish design company and the creator of woven vinyl flooring. Bolon products are trend-setting with distinct focus on innovation, quality and sustainability. The designs deliver the beauty of a woven textile with the benefits of resilient flooring – long life cycles and ease of installation and maintenance. The Bolon portfolio encompasses an infinite range of design possibilities, suitable for all commercial applications, including indoor and controlled outdoor flooring, wall-coverings and area rugs. Head-quartered and manufactured in Ulricehamn, a town in the heart of Sweden's textile region, Bolon continues to be the world's leader in woven vinyl textiles and is globally represented and distributed through sales partnerships that ensure consistent and reliable product deliveries. Bolon is exclusively represented in Australia and Southeast Asia by The Andrews Group.

The History

Over 60 years ago in Sweden, an idea was born to turn textile waste into rag rugs and the Bolon story began. Bolon's initial product was revolutionary at the time, and it characterised a desire to lead rather than to follow. The man who lit the spark was Nils-Erik Eklund, the founder of Bolon. Today, his granddaughters, Annica and Marie, continue to carry the torch. Since they took over the company from their parents in 2003, they have been on a mission to make Bolon a design-led innovator and fuse the once conservative flooring company with the limitless creativity found in fashion, art, architecture and interior design. View the full story at bolon.theandrewsgroup.com.au.

bo/lon

a combination of the first and last letters of the Swedish words for cotton (bomull) and nylon.





Bolon Weavery: Top Layer, Weave

Product Overview

Durable and easy to maintain, Bolon is a smart flooring solution that can be used in diverse environments with complete confidence.

Product Structure

Bolon material is comprised of four layers, fused together through a heating process.

1. Top Layer, Weave

A set of vinyl threads (warp and weft) that are woven together and characterised as profiled, elliptical or folded.

2. Upper Layer, Backing

Fire-protective backing (Bfl-s1 Classification).

3. Middle Layer, Backing

Glass fibre layer for dimension and stability.

4. Bottom Layer, Backing

Adjustable for rolls, tiles or acoustic needs.
This layer is comprised of up to 33% recycled content.

100% Made In Sweden | 100% Quality

All design, production and distribution activities are based at the Bolon factory in Ulricehamn. This strategy of centralisation allows Bolon to ensure expertise across the entire value chain, while encouraging flexibility and innovation.

Designs deliver the beauty of a woven textile with all the benefits of resilient flooring – long life cycles and ease of installation and maintenance.

As an international design brand, boasting collaborations with world-renowned architects and designers, Bolon is always at the forefront.



Bolon Studio™ Scale Flow Stream

Bolon Benefits

The performance behind the aesthetic.



Resilient

Bolon offers the highest durability ratings for textile products. The European standard 685 has classified Bolon products as 32 and 33, suitable for heavy commercial traffic.



Quality product & service

All Bolon collections are developed, designed and manufactured in Sweden, without any exceptions. This allows Bolon to control every step of the process, with a focus on quality and detail.



Hygienic & Hypo-allergenic

Bolon yarn is innately resistant to microbial invasion and with very low VOC emissions, the collection contributes positively to indoor air quality.



Water resistant

Bolon is impervious to liquid, resulting in a waterproof and rot-resistant product.



Slip-resistant

The woven structure of Bolon flooring is slip resistant, making it appropriate for public areas exposed to heavy foot traffic.



Easy to maintain

Boasting simple care and maintenance routines requiring no harmful chemicals, Bolon is an easy to maintain flooring solution. In addition, the compact yarn results in fewer places for dirt and debris to hide.



Indoor / Outdoor

Suitable for both indoor and controlled outdoor use, Bolon maintains its structure when exposed to everyday wear.



Sustainable

Celebrated for its excellence and visionary thinking in relation to sustainability and in accordance with the strictest environmental standards, Bolon uses only the highest quality raw material in its production and without phthalates. In addition, the simple care and maintenance routines require no harmful chemicals and the extensive product life minimises waste and environmental impact.



Comfort

Bolon provides comfort underfoot and has antistatic properties to protect against unpleasant shocks.



Superior Technical Qualities

Superior technical qualities including up to 15-year warranty and suitable for heavy commercial traffic.

Bolon Collection Rugs

Functional by nature, versatile by design

Bolon Rugs offer designers the freedom to specify flooring unique to each project, without the burden of complicated installation and maintenance requirements.

Using a combination of woven-textile flooring from Bolon in Sweden with local design and craftsmanship, Bolon Rugs deliver high performance, customised solutions for indoor and outdoor environments, including:

- Guest Rooms
- Lobbies
- Controlled Outdoor Recreational Areas
- Corridors
- Shopping Centres
- Dining Spaces
- Office Spaces

With a distinct focus on innovation, quality and sustainability, Bolon Rugs combine the remarkable durability of vinyl with the aesthetic appeal and texture of textile flooring.



Standard Edge Rug



Studio Raw Edge Rug: Bolon Studio® Wing Silence Sense and Silence Balance



Collection Rugs

Bolon Collections Rugs rest effortlessly on a variety of surfaces.

The program consists of five categories:

- Standard Edge
- Bolon Border
- Fabric Border
- Custom Shape
- Studio Rug

Important Information:

- Largest recommended size:
3.8m x 8m
- Standard Edge, Bolon Border, Custom Shape and Studio Rugs are fitted with 1.2mm moisture barrier underlay if required
- Over 100 colour options available.
Visit bolon.theandrewsgroup.com.au to view Bolon collections and articles



Standard Edge Rug: Create Facio

Standard Edge

With over 100 Bolon floors and a variety of sizing options, design transformations have never been easier. Standard Edge rugs are both versatile and timeless.



Colours shown are a selection only.
Please contact The Andrews Group
for specific colour preferences and
requirements or visit
bolon.theandrewsgroup.com.au



Bolon Border Rug: Ethnic Abisko with Ethnic Gabna border

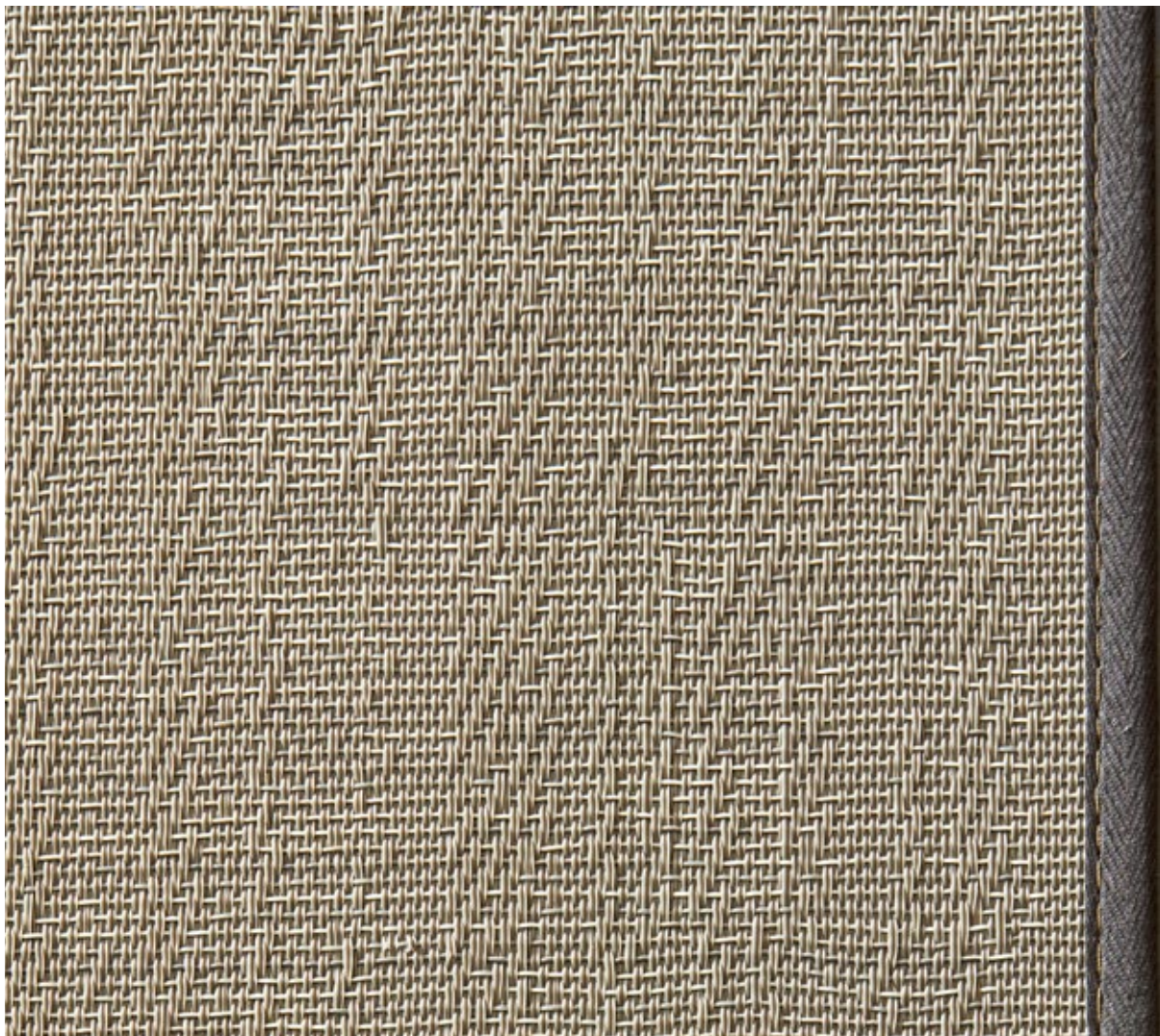
Bolon Border

Bolon border designs offer creative possibilities for architects and designers, enabling two Bolon materials to be combined in a variety of sizes and border widths.



Bolon Border Rug: Now Champagne and Now Silver

Colours shown are a selection only.
Please contact The Andrews Group
for specific colour preferences and
requirements or visit
bolon.theandrewsgroup.com.au



Fabric Border Rug: BKB Sisal Plain Sand

Fabric Border

For an additional design touch, a fabric border can be applied to any article in the full Bolon range. The fabric border is available in Black, Charcoal, Taupe and Beige.



Colours shown are a selection only.
Please contact The Andrews Group
for specific colour preferences and
requirements or visit
bolon.theandrewsgroup.com.au



Custom Shape Rug: Graphic Gradient Black

Studio™ | Custom Shape

For projects requiring a custom design, our state-of-the-art cutting machines can produce various shapes and graphic elements with intricate detailing and curves. In addition, Bolon Studio™ shapes can be used to enhance space distinction and individuality, allowing for various configurations and aesthetic options. Bolon Studio™ Rugs are available in straight edge format or raw edge to highlight the shape and provide unmatched layout possibilities.



Bolon Studio™ Rug: Now Champagne, Now Silver,
Now Tangerine and Now Carnation

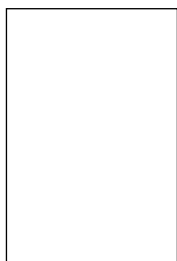
Colours shown are a selection only.
Please contact The Andrews Group
for specific colour preferences and
requirements or visit
bolon.theandrewsgroup.com.au

Endless Design Possibilities

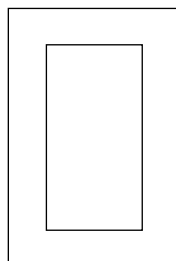
Functional by nature, versatile by design

Offering architects and designers the freedom to specify flooring unique to each project, Bolon Collection Rugs enables the customisation of shape, colour, size, edging and border.

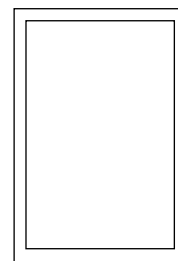
Standard Edge



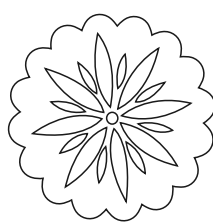
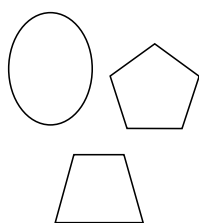
Bolon Border



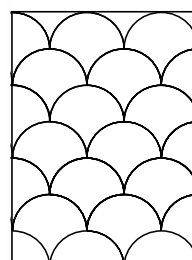
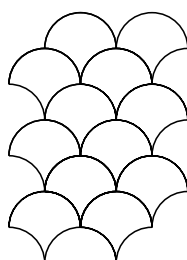
Fabric Border



Custom Shape



Studio™ Rug*



* Choose from 7 custom shapes available for our Studio Rug



IMPORTANT INFORMATION: • Some Bolon Border, Studio Straight Edge and Studio Raw Edge area rugs are fabricated with a 1.2mm thick underlay. • In addition to standard 2 x 3 metre dimensions, rugs can be customised to any size and shape using our state-of-the-art cutting machines that can produce various shapes and graphic elements with intricate details and curves. Some sizing restrictions may apply with different options. Please contact your sales representative for further information. • Round and oval-shaped area rugs are considered custom products, requiring a detailed seaming process. • Choose from over 100 colours in the Bolon range. Visit bolon.theandrewsgroup.com.au to view the full range or contact us for specific colour and shape preferences and requirements



Bolon Studio™ Wings Straight Edge Rug: Botanic Picea,
Botanic Osier and Artisan Ivory



Bolon Recycling Plant

Bolon Green[®]

Bolon adopts a holistic approach to environmental responsibilities and a journey of innovation that starts long before flooring is produced and long after it has fulfilled its intended purpose.

0% Waste

Bolon manufacturing produces 0% waste. Pre-consumer waste generated by suppliers is also fed into Bolon's on-site recycling plant (\$17 million investment).

33% Recycled

All Bolon collections contain up to 33%. By 2020, this figure will rise to 50%.

100% Committed

With sustainability at the core of everything they do, Bolon is 100% committed to improvements across all parts of the business.

Choose Green

- ✓ **Modern Best Practice PVC**
derived from natural resources (salt and oil) and free of harmful chemicals (phthalates and heavy metals).
- ✓ **Environmental Certificates**
the world's most stringent certificates.
- ✓ **Cradle to Cradle**
a continual process including the auditing of raw material suppliers and healthy installation alternatives like NoGlue[®] and Bolon Green Weld that has no negative impact on the environment and can be recycled and reused over and over again.
- ✓ **10 or 15 Year Warranty**
and 32 or 33 durability classification.
- ✓ **Easy to Clean Without Chemicals**
meaning less damaging for our water supply.
- ✓ **Made and Recycled in Sweden**
with people, animals and the plant in mind. Production uses 100% renewable energy.

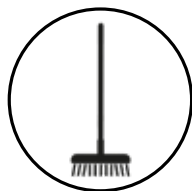
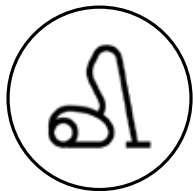
Bolon product and process certifications include:

Green Building Council Australia Best Practice PVC, Floorscore, BREEAM, Environmental Product Declaration (EPD), Green Tag, M1, Basta, Portico and more.

Learn more about [Bolon's sustainability and recycling approach](#).

Bolon Care+

Follow our simple instructions to maintain a clean floor.



Bolon floor coverings are water resistant, can be scrubbed and cleaned using wet methods. For a general clean:

- **Vacuum** area.
- **Spot clean** with a scrubbing brush (or Scrubber-Dryer machine with soft brush rollers) and warm water.
- **Dry** wet areas If required, with a soft or microfibre cloth.

Spot Cleaning

- For dry spills, use a vacuum or brush and pan to clean the spill.
- For spot removal, use a scrubbing brush, warm water and a minimal dose of all-purpose cleaner with a PH of 7-8.5. Scrubber-Drying machines can also be used if preferred.
- Dry wet areas with a soft or microfibre cloth.

Stain Removal

- Treat the stain as soon as possible for best results. Most stains can be removed with a brush and water.
- If using a stain remover, ensure it is safe to use on vinyl flooring.

Removal of Challenging Stains

Stain	Advice
Chocolate, fat, juice, coffee, beer, wine	Hot water with strong cleaner
Asphalt, oil, shoe cream, chalk, ink	Chemically pure petrol
Blood	Cold water and ammonia (if needed)
Rust	Light acidic (PH 3-4) cleaner
Water-based glue	Hot water
Solvent-based glue	Chemically pure petrol
Marks from shoes	Rub with dry cloth
Chewing gum	Hot steam or freeze spray



Machine - Wet Vac Scrubber-Dryer Method

The use of the Wet Vac Scrubber-Dryer Method will depend on the size of the project, level of traffic, likelihood of spills and colour choice.

- Vacuum relevant area.
- Use a Scrubber-Dryer machine with soft brush roller, warm water and a minimal dose of all-purpose cleaner with a PH of 7-8.5 (to avoid the need to rinse the floor). If possible, clean along the longitudinal weave direction.

Restoration Clean

A poorly maintained or extremely dirty floor can typically be restored to a near new condition.

- Vacuum relevant area.
- Remove difficult stains. See REMOVAL OF CHALLENGING STAINS.
- Use a Scrubber-Dryer machine with soft brush rollers, warm water and a strong, alkaline all-purpose cleaner with a PH of 9-11. Wet the floor by running the machine with the recommended cleaning solution (do not use the suction function). If possible, clean the floor along the longitudinal weave direction.
- Leave for 5-10 minutes, without allowing it to dry.
- Rinse twice with clean water using the Scrubber-Dryer machine or until the floor no longer lathers.

* Contact Customer Service at The Andrews Group for assistance and advice.

+61 (03) 9827 1311 | bolon@theandrewsgroup.com.au



BOLON

THE ANDREWS GROUP

bolon.theandrewsgroup.com.au
bolon@theandrewsgroup.com.au